

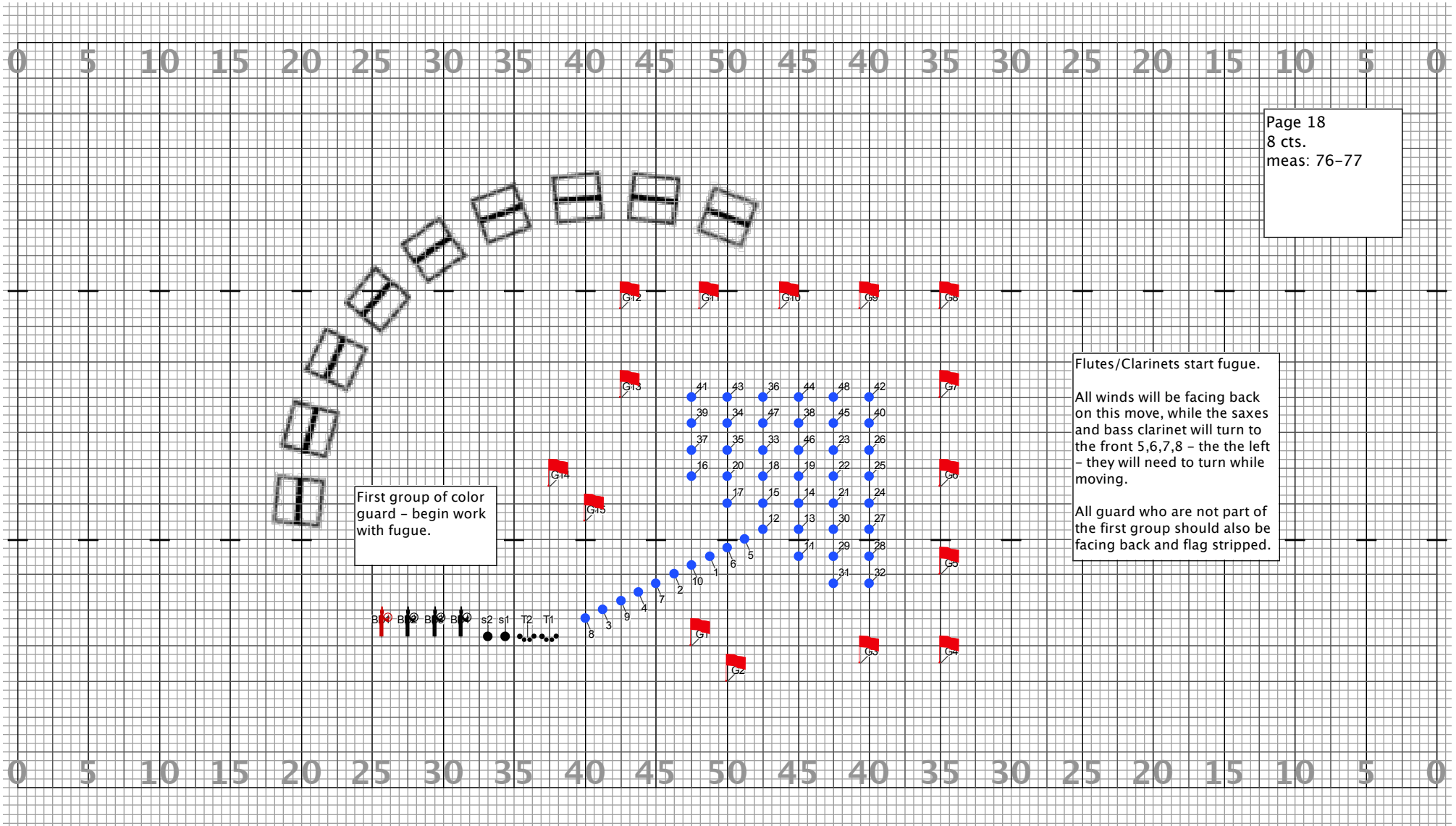
Page 17A  
 6 cts.  
 meas: 74-75  
 Hold

The end of this hold will be a quick turn to the back on counts 5-6. This turn is only for the winds, minus the flutes and clarinets, and minus the guard who begin the fugue. (look ahead to next page).

The drums do not turn, but a good visual is in order.

This will literally be release, turn, go. Very fast!

Director Viewpoint

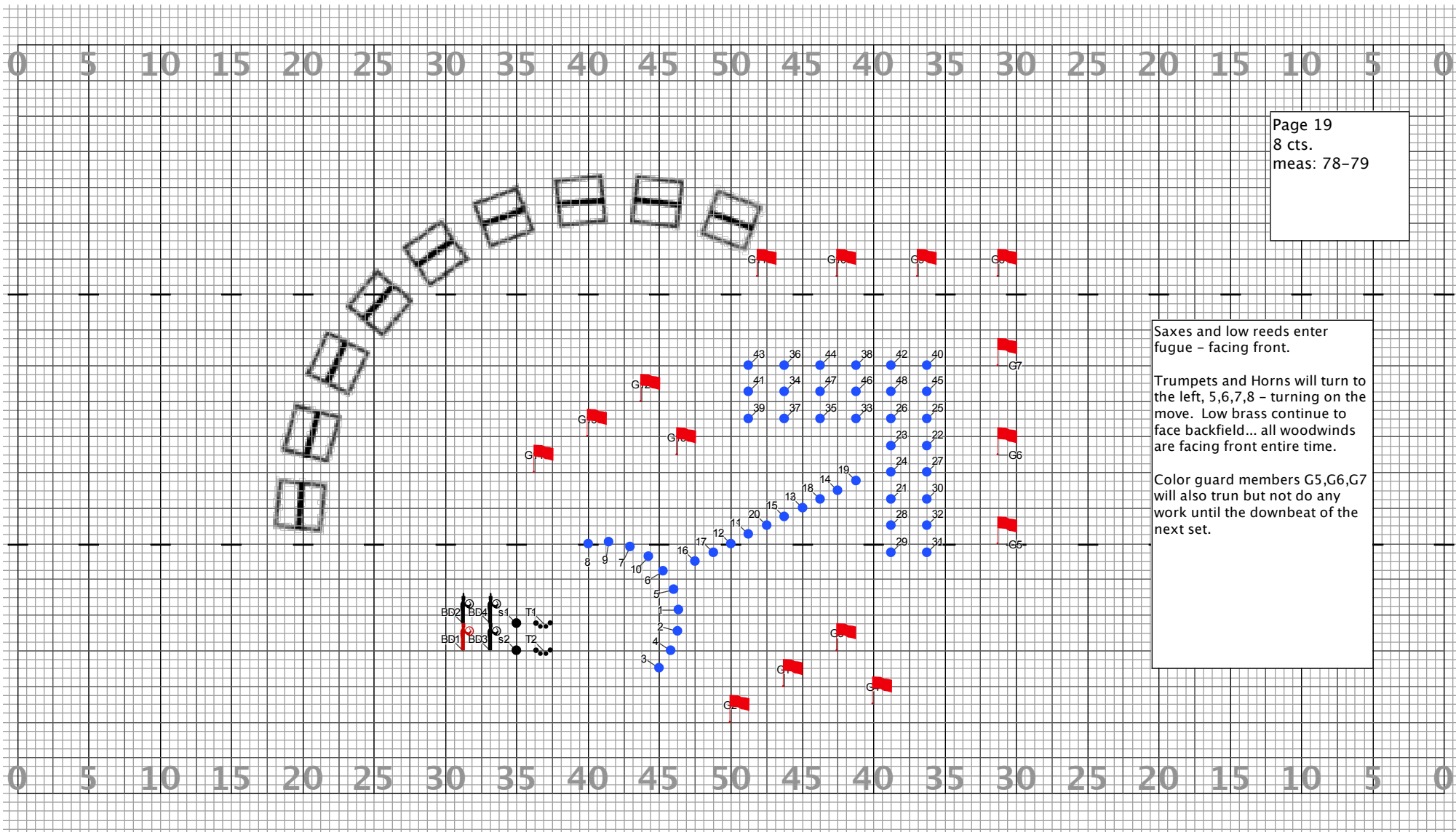


Page 18  
 8 cts.  
 meas: 76-77

First group of color guard - begin work with fugue.

Flutes/Clarinets start fugue.  
 All winds will be facing back on this move, while the saxes and bass clarinet will turn to the front 5,6,7,8 - the the left - they will need to turn while moving.  
 All guard who are not part of the first group should also be facing back and flag stripped.

Director Viewpoint



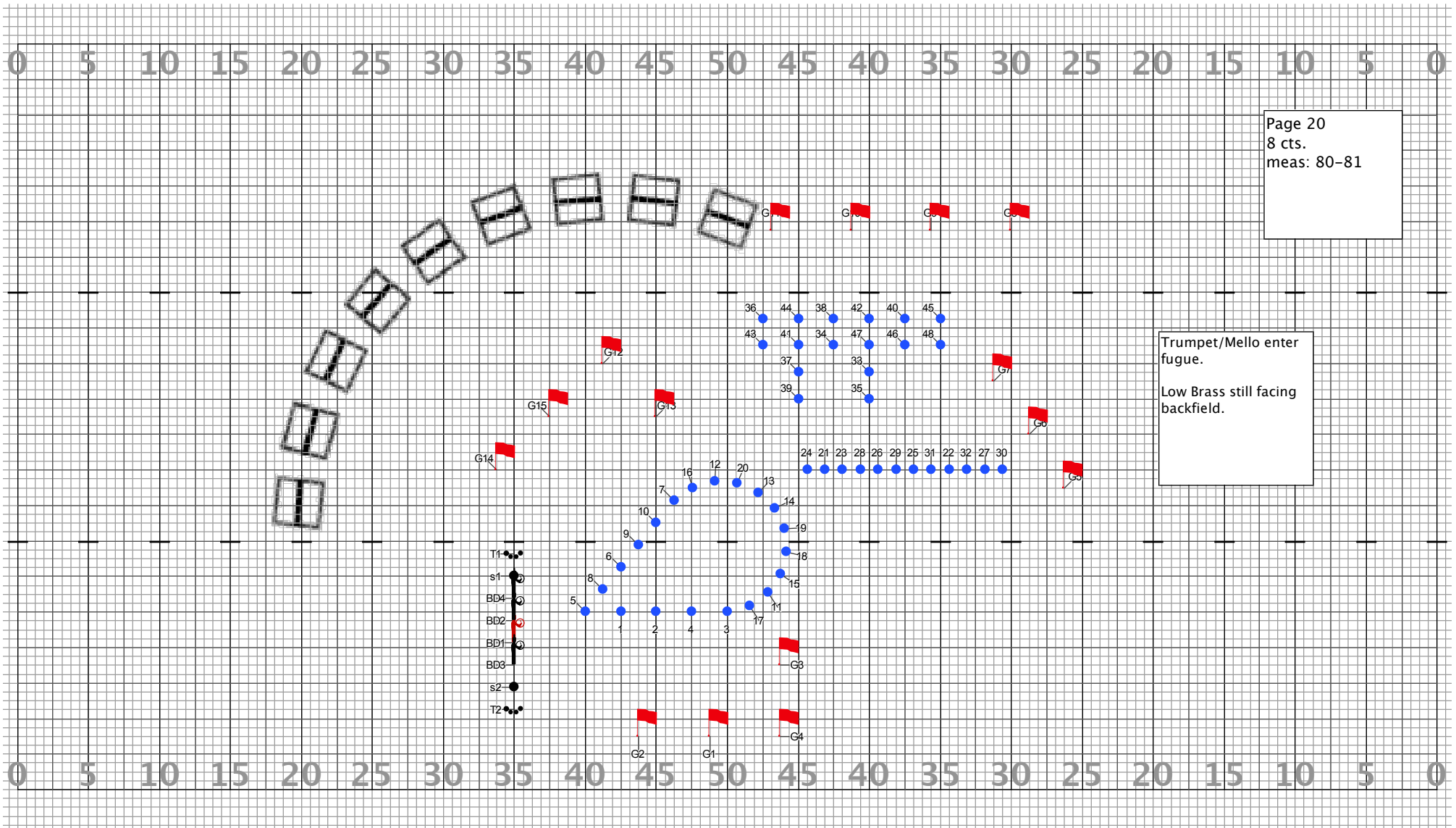
Page 19  
 8 cts.  
 meas: 78-79

Saxes and low reeds enter fugue - facing front.

Trumpets and Horns will turn to the left, 5,6,7,8 - turning on the move. Low brass continue to face backfield... all woodwinds are facing front entire time.

Color guard members G5,G6,G7 will also turn but not do any work until the downbeat of the next set.

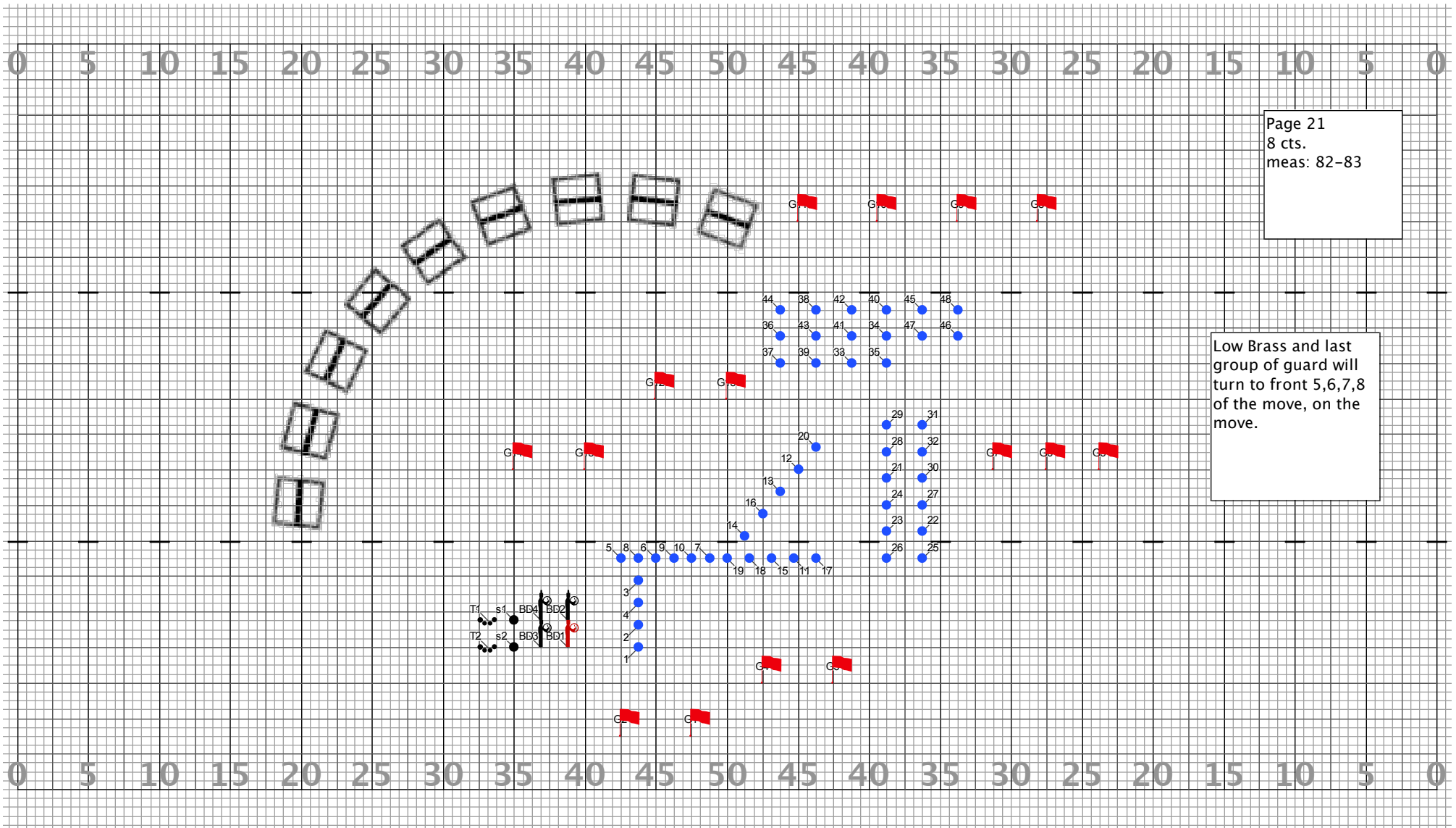
Director Viewpoint



Page 20  
 8 cts.  
 meas: 80-81

Trumpet/Mello enter fugue.  
 Low Brass still facing backfield.

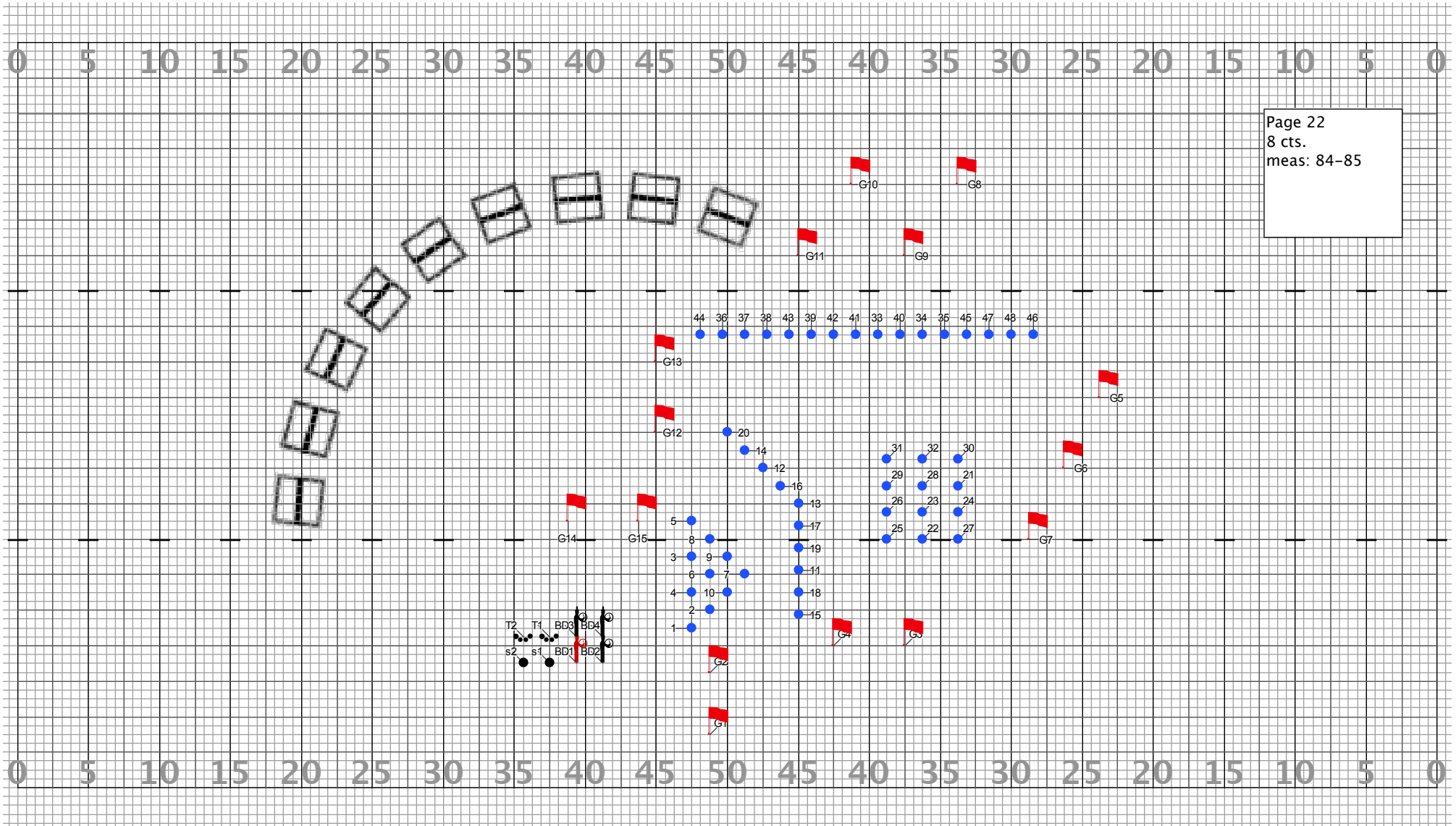
Director Viewpoint



Page 21  
 8 cts.  
 meas: 82-83

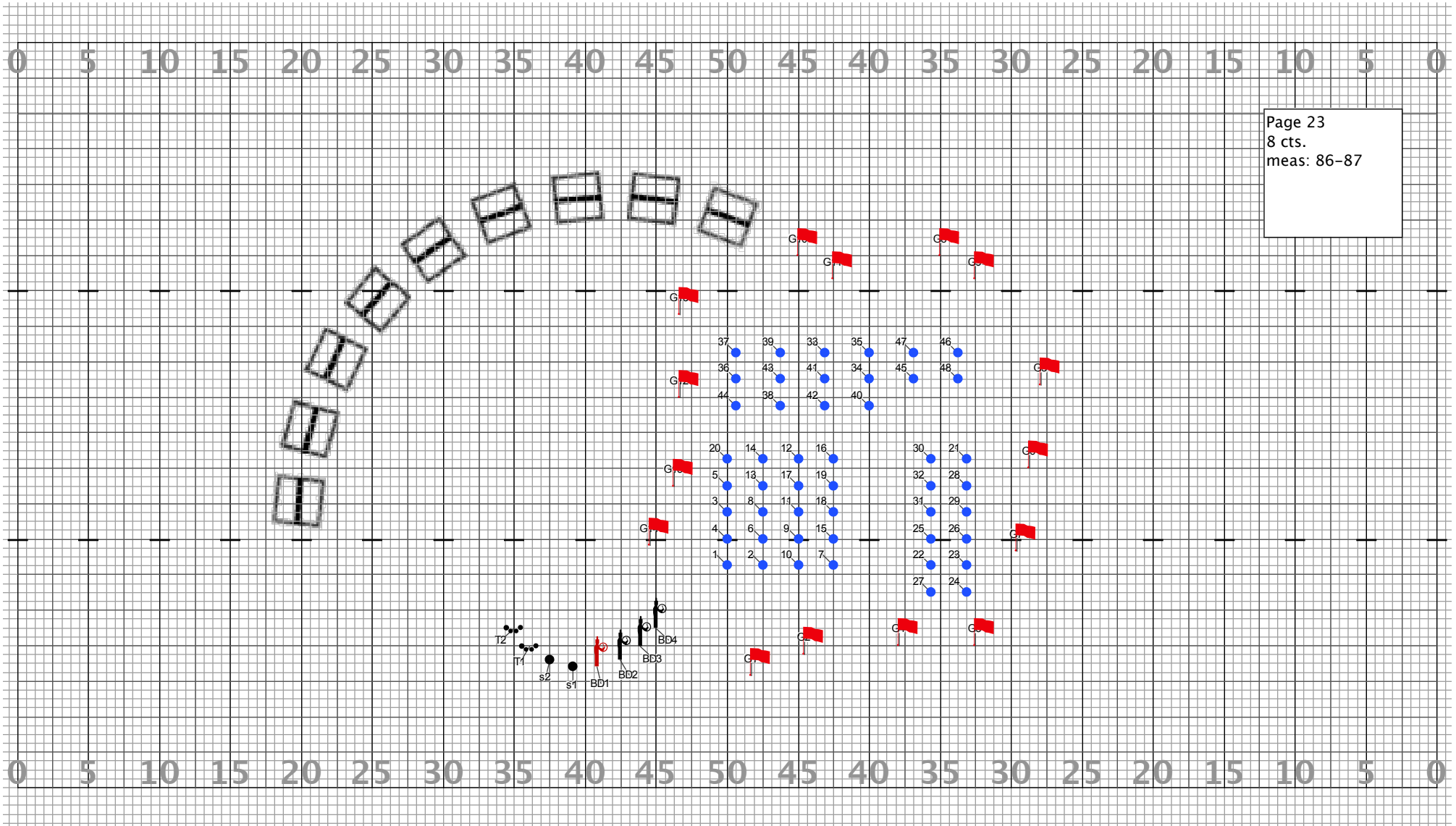
Low Brass and last group of guard will turn to front 5,6,7,8 of the move, on the move.

Director Viewpoint



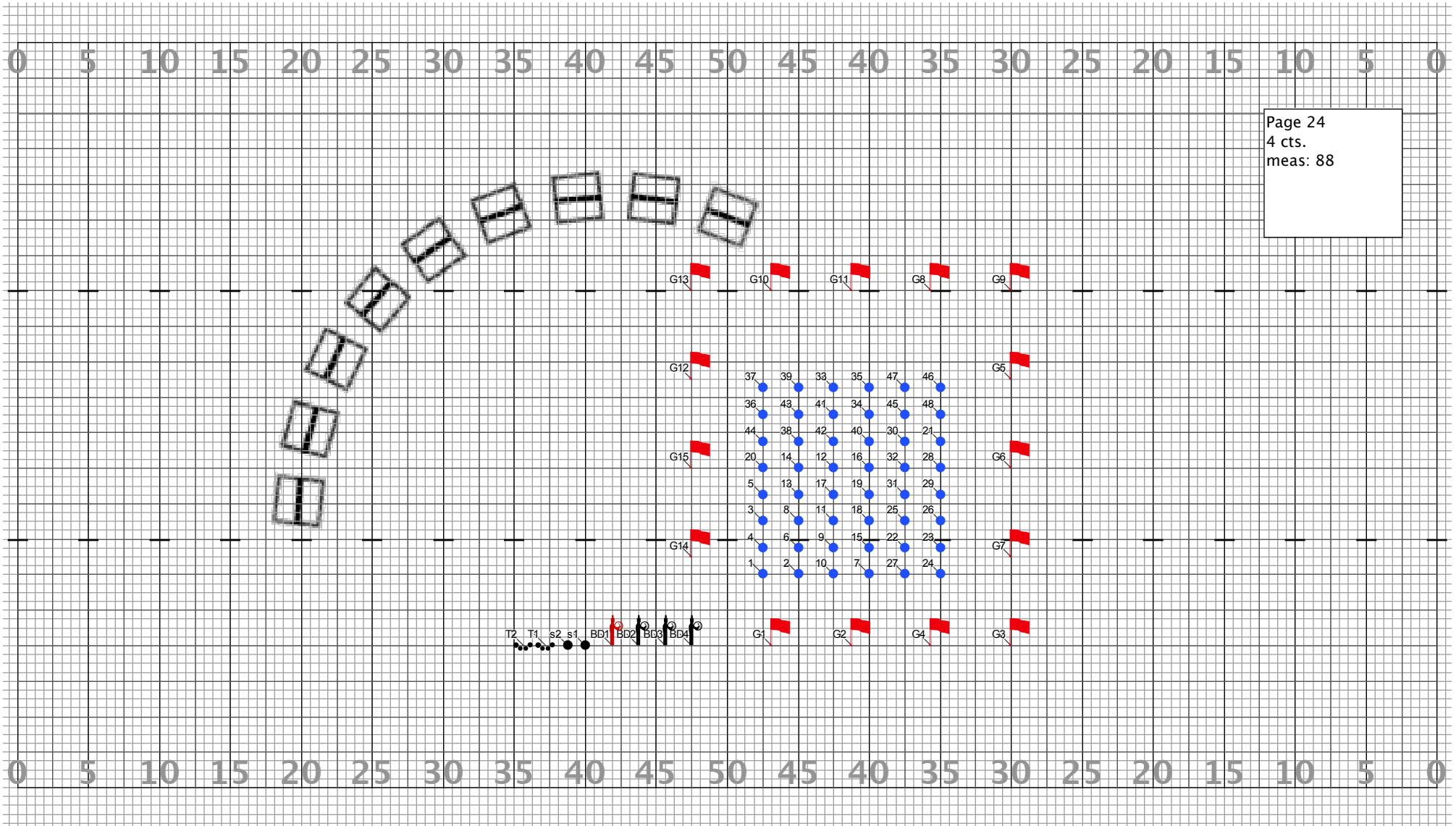
Director Viewpoint

Calloway County HS 2009  
 Bring On The Night  
 "As the sun sets, the darkness creeps in..."  
 Drill by George Hester



Director Viewpoint

Calloway County HS 2009  
Bring On The Night  
"As the sun sets, the darkness creeps in..."  
Drill by George Hester



Page 24  
 4 cts.  
 meas: 88

Director Viewpoint

Calloway County HS 2009  
 Bring On The Night  
 "As the sun sets, the darkness creeps in..."  
 Drill by George Hester

Licensed to: George Hester Created on Pyware 3D.